



November 27, 2007

# **tideline aquatics** Newsletter

## **Tideline Aquatics Store Hours**

Monday – Friday 11am-7pm  
Saturday 10am-6pm  
Sundays 1pm-5pm

## **TIDELINE NEW SERVICES:**

### **Home Aquarium Cleaning Service –**

Rate: \$65.00 first hour / \$50.00 per hour each additional hour. Call for an appointment!

Our complete aquarium cleaning service includes: in/out cleaning of the aquarium and cabinetry, a 25% partial water change (reverse osmosis water included in the cost), substrate vacuuming, decorative coral/plants cleaned, filters serviced (existing media will be cleaned), activated carbon changed (included in the cost), overall health of organisms inspected, wipe down of entire system, water analysis (pH, ammonia, nitrite, carbonate hardness, salinity (if saltwater), GH (freshwater only)). If adjustments of water parameters are required, we will give you a written list of what you will need to purchase to fix any issues with your water. We will also give you a list of recommendations if any part of your system is not functioning properly.

### **Aquarium Equipment Drop-off Service –**

Protein skimmers, water pumps, filters, glass tops, etc. Drop off your aquarium product for a complete break down and cleaning for only \$20.00! This is a 24 hour service except for Sunday drop-offs.

### **Tideline Referral Program –**

Now when you bring in a family member, friend, neighbor or just someone off the street, you will receive a \$25.00 Tideline Gift Certificate if they decide to purchase a new aquarium package (20 Gallons or larger) from Tideline Aquatics. All you need to do is come to the store when your guest is purchasing their aquarium. The aquarium

purchase must be 20 gallons or larger and include at least the tank, hood, light and stand (filtration components in lieu of stand). At the register, you will receive your \$25.00 Gift Certificate to use toward anything you wish at Tideline Aquatics. Just our way of saying “Thank you!” for bringing us a new customer.

## **TIDELINE “WALL OF FAME”**

### **PICTURE CONTEST – WIN \$100.00 GIFT CERTIFICATE TO TIDELINE**

Beginning on Friday, November 23<sup>rd</sup>, you will be able to enter our “Wall Of Fame” picture contest. We will allow one photo per household for entry into the contest. Just bring in your BEST 8x10 glossy photo of your aquarium or pond. It can be a wide shot of your entire aquarium/pond or a close-up of your favorite aquarium or pond creature from **YOUR** aquarium or pond. You will need to include an index card with your name, address and phone number, the size of your aquarium or pond, how long it has been established, and type (reef, planted, water garden, etc). Blurry photos will not be accepted!! We will hang your photos in the store permanently! On December 31<sup>st</sup>, we will pick a winner based on the best photo quality AND creativity. Your personal information will be kept confidential.

The winner will receive a \$100.00 Tideline Aquatics gift certificate toward anything in the store you wish! Get your camera out and start clicking. Entries for the contest must be submitted before closing on DECEMBER 30<sup>th</sup>!! Each photo entered will be framed (by us) and hung in the store for everyone to enjoy. Enter your photo for a chance to win the \$100.00 Tideline Gift Certificate.

**Continued on next page....**

## **WOOD CANOPY CLOSE-OUTS**

After cleaning up our warehouse, we found numerous solid wood aquarium canopies from a former cabinet maker. Here are the sizes available, color and cost:

- (2) 48" Cherry/ fits most 55 gal. Tanks - **\$85.00 ea.**
- (3) 36" Oak/ fits most 30L/38/45 Tanks – **\$75.00 ea.**
- (1) 30" Oak/ fits most 20L/29/37 Tanks - **\$60.00 ea.**
- (1) 30" Cherry/ fits same as above - **\$60.00 ea.**
- (2) 48x18 Oak/fits most 75/90 Tanks - **\$95.00 ea.**
- (1) 48x13 XTALL Walnut for 55 gal. - **\$90.00 ea.**

Measure the exact length and width of your aquarium BEFORE purchasing one of these canopies so we can compare the dimensions with the inside dimension of the canopy to ensure it will fit your aquarium. All sales are final on these canopies and no exchanges or refunds will be offered. Get a great deal on a solid wood canopy for your aquarium before they are all sold out! Just ask a salesperson during your visit and we will bring the canopy over from the warehouse for you to view. We will measure it for you to ensure it will fit your aquarium before you take it home.

## **PROPER CARE FOR YOUR BIOLOGICAL FILTER MEDIA**

Whether it is for a garden pond, a saltwater aquarium or a freshwater aquarium, a quality filter will contain some sort of biological media. Wet/Dry filters use bioballs, Power filters may use a foam pad or bio-wheel, Canister filters may use ceramic noodles and Pond filters may use shredded PVC or plastic ribbon.



**MANY TYPES OF BIO-MEDIA PICTURED ABOVE**

When you buy any of these types of filters, the biological media will be clean and free of any beneficial bacterial growth. Within a few weeks of being added to your aquarium, that same bio-media becomes teeming with these beneficial bacteria that establish your aquarium by reducing

ammonia and nitrite being produced by your aquariums organisms (fish and/or invertebrates). The mistake many aquarists make is how they care for the biological media. So often, the biological media is taken from the filter and rinsed clean with tap water!! That spells doom for your beneficial bacteria that WERE established there. The chlorinated tap water kills these bacteria leaving your aquarium inhabitants to suffer the consequences – a surge in ammonia and/or nitrite in the aquarium. If this happens, you will nearly always kill some of your fish or invertebrates until the bacteria become re-established on the bio-media. If the bio-media requires some clean up, DO NOT use tap water. Instead, use some water from the aquarium to gently clean your bio-media. Water pulled from the aquarium during a partial water change is safe to use to rinse off your bio-media. You can also use treated (water conditioner – dechlorinator) tap water or freshly mixed saltwater in saltwater applications. In the garden pond, remove a bucket of pond water or use treated tap water or well water to clean accumulated debris from the bio-media. At some point, your bio-media will require some cleaning as accumulated debris can clog the porous media and reduce the surface area that beneficial bacteria utilize. Proper cleaning will protect the bacteria from being killed thus protecting your fish from harmful ammonia and nitrite spikes.

## **ANEMONES IN THE AQUARIUM**

Nearly every new saltwater aquarist wants an anemone and a clownfish for their new marine aquarium. At Tideline, often a customer we have tried to discourage from purchasing an anemone will go to another store and purchase one there (or on-line) anyway! Anemones are not for every aquarium – it is a fact folks. Most anemones collected for the aquarium trade are photosynthetic animals. This means that one important requirement for keeping an anemone alive is intense reef –type lighting systems. Just like many of the live corals we keep, most anemones contain zooxanthellae algae that feed the animal during the process of photosynthesis. Without intense lighting, the anemone will fade in color (often turning white) and slowly shrink away and die. Anemones also require excellent water conditions – no phosphates or nitrates!



Anemones also require strong water currents to aid in expelling waste material and collecting of food particulates. Most anemones also require direct feedings of chopped shrimp, cut fish, squid and/or vitamin enhanced mysis about three times per week. Brine shrimp alone will NOT suffice for a complete diet for your anemone. These animals are also territorial toward different species. Mixing two different anemone varieties will often result in the demise of one or both of the anemones if they come in contact with one another. If you want more than one anemone in your aquarium, choose two of the same type of anemone.



A ROSE BUBBLE ANEMONE W/ OCELLARIS CLOWNS

In the reef aquarium, an anemone will move about the aquarium in search of strong water flow and light. Any corals, clams or other animals that may come in contact with the anemone can be stung. This could result in the loss of the live coral AND the anemone! Also be aware that if one of your fish happens to dart into the anemone, it will be stung. The anemone may consume the fish or it may just sting it causing the fish to die. Now that you know the facts and you still want an anemone for your aquarium, purchase a variety that has a good survival record for the captive environment.

**HARDIER ANEMONES –**



BUBBLE ANEMONE



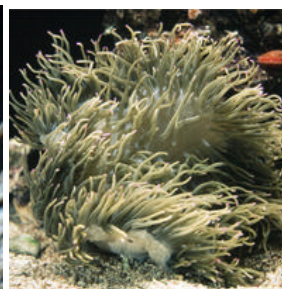
LONG TENTACLE ANEMONE



ROCK ANEMONE



ZEBRA LONG TENTACLE



CONDYLACTUS ANEMONE BRN SEBAE ANEMONE

Here are a few quick notes about the hardier anemones we have pictured here. Bubble anemones are found in green, pink and brown colors. These are the hardiest of the pacific anemones often dividing in the aquarium. Long tentacle and zebra long tentacle anemones prefer to attach within the substrate – a requirement for these anemones. Sebae anemones should never be purchased if they are white or bright yellow in color. They are those colors because the zooxanthellae algae within the anemone have bleached thus leaving the anemone to starve. Both the rock anemone and the condylactus anemone are hardy but are from the Caribbean. Clownfish cannot bond with either of these anemones and can be eaten by them!

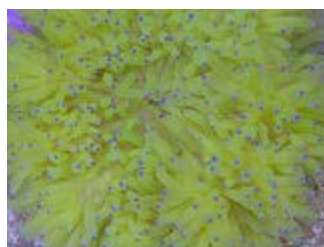
**ANEMONES THAT RARELY SURVIVE IN CAPTIVITY –**



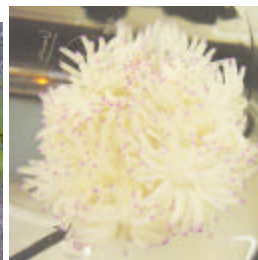
CARPET ANEMONES



RITTERI ANEMONE



YELLOW SEBAE ANEMONE



WHITE SEBAE ANEMONE

Though beautiful, carpet anemones are extremely delicate and seldom survive long in the aquarium. Ritteri anemones often refuse to eat and starve in the aquarium. Both the yellow and white sebae anemones are those colors due to the

demise of the photosynthetic algae within the tissue. These anemones will slowly shrink and die without the symbiotic algae. In the wild, anemones can live for more than 30 years! In the aquarium, give them the same chance of survival by purchasing species that tend to thrive. Nearly all wild-collected clownfish will accept Bubble Anemones. Maroon clownfish, sebae clownfish, skunk clownfish and tomato clownfish will also accept Long Tentacle Anemones (pacific) and Brown Sebae Anemones. Ocellaris and True Percula clownfish tend to refuse both of these anemone species but accept bubble anemones.

## Fish of the Week



**THE FLORIDA FLAGFISH (JORDANELLA FLORIDAE)**  
This beautiful American killiefish is collected in the waters of Southern Florida to the Yucatan Peninsula. This fish is sometimes referred to as the American Flagfish due to the bright red striping the male develops as he matures. These fish are egg-layers and if you plan on breeding them, the female should be removed after spawning to prevent the male from attacking her as he guards the nest. Though these fish are known to be excellent hair-algae eaters, they will sometimes nip at tender plants if enough algae is not present in the aquarium. These fish can be territorial but seldom cause any damage though they will eat very small fish and crustaceans. Supplement their diet with a spirulina-based flake food. We suggest keeping flagfish with gouramis, bala sharks, larger tetras and rasboras. These fish are not temperamental about water conditions if acclimated slowly. **This is just one of the specials you will find this week on our website coupons. Print the coupon at: [www.tidelineaquatics.net](http://www.tidelineaquatics.net)**

## What's New At Tideline

**FEEDERS (ARRIVED TUESDAY):** Feeder Guppies, Feeder Goldfish, Feeder Rosys, Feeder Crayfish, Feeder Fiddler Crabs, Live Black Worms.

### **FRESHWATER FISH (ARRIVED TUESDAY):**

**Livebearers** – Black Yucatan Mollies, Velvet Wag Swordtails, Sunburst Mickey Mouse Platies, Red Tuxedo Platies.

**Catfish** – Red Loricaria Whiptail Catfish, Chinese Algae Eaters, Farawella Twig Catfish, Common Plecostomus, Tank Bred Bristlenose Plecostomus, Bumble Bee Catfish, Fourline Pictus Catfish, Sun Catfish, Panda Cory Catfish, Botia Lohachata Loach (Yoyo), Banded Kuhli Loaches, Black Sharks, Redtail Black Sharks, Colombian Shark Catfish, Rainbow Sharks.

**Brackish** – Figure Eight Pufferfish, Green Scatophagus, Red Ruby Scatophagus, Sleeper Gobies.

**Tetras / Rasboras** – Florida Bred Neon Tetras, Florida Bred Cardinal Tetras, Rummynose Tetras, Black Neon Tetras, Head & Tail Lite Tetras, Gblite Tetras, Black Skirt Tetras, White Fin Rosy Tetras.

**Gouramis / Bettas** – Female Bettas, Male Bettas, Moonlite Gouramis, Sunset Honey Gouramis, Gold Honey Gouramis.

**Cichlids** – Assorted Oscars, Green Terrors, Bolivian Altispinosa Rams, Pike Cichlids, Managuense Jaguar Cichlids, Firemouth Cichlids, Standard African Cichlids, Premium African Cichlids (SUPER NICE SELECTION).

**Other** – Geophagus surinamensis Eartheaters, Giant Danios, Mystery Snails, Peacock Eels, Medium Silver Arowanas, Florida Flagfish, Freshwater Flounders, Leporinus fasciatus, African Ropefish, African Whales, Green Glofish, Dwarf African Frogs, Lg Royal Knifefish.

### **LIVE AQUATIC PLANTS (EXPECTED FRIDAY):**

Bacopa Bunches, Cabomba Bunches, Ludwigia peruensis Bunches, Rotala indica Bunches, Potamogeton gayi Bunches, Wisteria Bunches, Amazon Swords, Anubius nana, Anubius Barteri,

Crypt. moehlimanni, Crypt. wendtii 'Bronze', Dwarf Baby Teardrop, Italian Vallesneria, Aponogeton ulvaceous, Red Ludwigia Bunches, Dwarf Hairgrass, Dwarf Baby Teardrop imbedded on rock, Giant Microsword, Narrow Microsword.

**SALTWATER FISH (EXPECTED WEDNESDAY):**

Angels / Butterflyfish: Queen Angelfish, Koran Angelfish, Black & White Heniochus Butterflyfish, Coral Beauty Angelfish, Argi Pygmy Angelfish, French Angelfish, Flame Angelfish, Flagfin Angelfish, Brown Heniochus Butterflyfish, Red Pearlscale Butterflyfish, Teardrop Butterflyfish.

**Clownfish** – Ocellaris Clownfish, Tank Bred Ocellaris Clownfish, Gold Stripe Maroon Clownfish, Maroon Clownfish, True Percula Clownfish.

**Gobies / Blennies** – Pearly Jawfish, Neon Gobies, Blue Torpedo Gobies, Clown Gobies, Purple Firefish, Common Firefish, Scooter Blennies, Spotted Mandarins, Redhead Gobies, Algae Blennies, Bicolor Blennies, Barnacle Blennies, Horseface Blennies, Tidepool Blennies, Tiger Watchman Gobies, Tiger Wardi Gobies, Barred Gobies, Scissortail Gobies, Midas Blennies, Candy Cane Gobies, Randall Gobies.

**Wrasses** – Mexican Rock Wrasses, Sixline Wrasses, Black Bird Wrasses, Half Black Wrasses, Dragon Wrasses, Orange & Purple Fairy Wrasses, Yellow Coris Wrasses, Multicolor Wrasses, Basket Wrasses, Purple Fairy Wrasses.

**Tangs** – Yellow Tangs, Blue Regal Tangs, Powder Brown Tangs, Sailfin Tangs, Clown Tangs.

**Triggerfish / Eels / Puffers** – Humu Triggerfish, Niger Triggerfish, Clown Triggerfish, Dogface Pufferfish, Valentini Pufferfish, Porcupine Pufferfish, Spotted Dogface Pufferfish, Blue Spotted Pufferfish, Banded Moray Eels, Chainlink Moray Eels, Green Wolf Eel.

**Lionfish** – Fumanchu Lionfish, Black Volitan Lionfish, Antennata Lionfish, Dwarf Lionfish, Fuzzy Dwarf Lionfish.

**Other** – Assorted Common Damselfish, Orangetail Damselfish, Green Chromis, Blue Reef Chromis, Fridmani Pseudochromis, Pajama Cardinalfish, Royal Grammas, Porkfish Grunts, Neon Velvet Damselfish, Barred Jackfish, Purple Basslets, Yellow Goatfish, Black Barred Soldierfish, Red Squirrelfish, Harlequin Bass's, Glass Eye Soldierfish, Chalk Bass's, Foxface Rabbitfish, V-Tail Groupers.

**INVERTEBRATES (EXPECTED WEDNESDAY):**

**Crustaceans** – Peppermint Shrimp, Monkey Saron Shrimp, Cleaner Shrimp, Curlique Shrimp, Anemone Shrimp, Sally Lite Foot Crabs, Atlantic Scarlet Hermits, Blueleg Hermits, Emerald Crabs, Coral Banded Shrimp, Horseshoe Crabs.

**Snails / Cucumbers / Starfish / Urchins** – Atlantic Turbin Snails (Astrea), Mexican Turbo Snails, Trochus Snails, Red Fromia Starfish, Basket Starfish, Serpent Starfish, Brittle Starfish, Sifting Cucumbers, Pink & Green Cucumbers, Pin Cushion Urchins, Short Spine Urchins.

**Corals / Polyps / Mushrooms** – Coralimorph Mushroom Polyps, Assorted Mushroom Rocks, Tubastrea Sun Corals, Green Wellsophyllia Corals, Red Trachyphyllia Corals, Green Trachyphyllia Corals, Red Chili Corals, Cultured Green Torch Corals, Cultured Frogspawn Corals, Cultured Hammer Corals, Candy Caulestrea Corals, Assorted Fancy Zoanthid Rocks.

**Anemones** – Florida Condylactus Anemones, Flower Rock Anemones, Brown Sebae Anemones, Long Tentacle Anemones, Common Bubble Anemones, Fancy Bubble Anemones.

**Other** – Atlantic Feather Dusters, Yellow Sea Fans, Assorted Caribbean Plants, Red Tree Sponges.

We currently have a nice selections of small assorted frags suited well for nano reefs also.