



# tideline newsletter tideline aquatics

## Tideline Aquatics Store Hours

Monday – Friday 11am-7pm  
 Saturday 10am-6pm  
 Sundays 1pm-5pm

### HARDY YET UNUSUAL LIVESTOCK CHOICES FOR YOUR AQUARIUM

This week we have chosen several freshwater fish, saltwater fish and invertebrates to highlight. Some are common species often overlooked, some are species we don't have too often, some are currently outstanding and new and others are just "for your information" purposes. The one factor they all have in common is hardiness if offered the correct food choices and proper water conditions! We have all of the featured livestock items in stock as of this writing.

### **FRESHWATER FISH:** **MALE OTOPHARYNX LITHOBATES** **AFRICAN CICHLID**



SUB-ADULT MALE LITHOBATES CICHLID

This Lake Malawi African Cichlid is a rarity at Tideline Aquatics but we were fortunate to have

a customer that breeds these incredible fish locally. Like all cichlids from Lake Malawi, the Lithobates cichlid prefers alkaline water with a pH of 8.0-8.6. The Lithobates is a mid-water swimmer that is not too hateful and thrives with other less aggressive cichlids like peacock cichlids, venustus cichlids, livingstoni cichlids, yellow labidochromis and the like. We currently have 3" sub-adults that are all males. As this fish matures, it develops the striking colors pictured below.



ADULT MALE LITHOBATES CICHLID

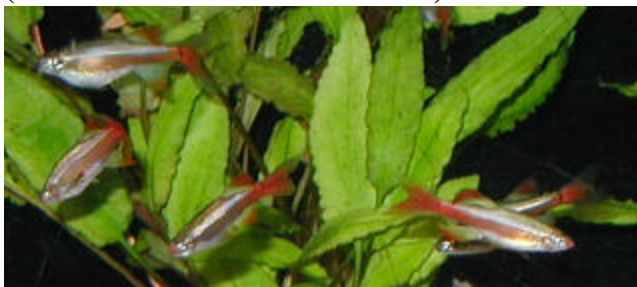
### **THE CONGO TETRA** **(PHENACOGRAMMUS INTERRUPTUS)**



SUPER MALE CONGO TETRA  
 (FEMALE IN BACKGROUND)

Nearly all of the tetras available in our hobby originate from South America but one of the loveliest tetras often overlooked is the Congo Tetra from Africa. Juvenile and female Congo Tetras are plain but adult males (which are what we currently have) are loaded with color that changes as the fish swims about the aquarium. An added bonus for the Congo Tetra is the elongated dorsal fin and tail fin with stark white outlines combined with black edging on the tail. Congo Tetras grow to about 4" long, prefer soft water and are peaceful with all fish that are not too tiny in size. This fish is also safe in a planted aquarium.

**LONGFIN WHITE CLOUD MINNOW  
(TANICHTHYS ALBONUBES)**



**SUB-ADULT LONGFIN WHITE CLOUD MINNOWS**

The hardy White Cloud Mountain Minnow has been an aquarium favorite for many years. Well now this beauty has been hybridized to a long-fin version. We have a large number of developing sub-adults that are loaded with red color. This longfin minnow is grown out quickly at fish farms so the body grows out before all of the long fins fully develop. As they matures in age, the fins grow out to the beautiful specimen you see below.



**ADULT LONG-FIN WHITE CLOUD MOUNTAIN MINNOWS**  
Longfin White Cloud Minnows prefer to be in groups of three or more. This fish schools in the upper areas of the aquarium and is the perfect community fish. In our area, this fish even survives outside year round if introduced in the

late spring months where it eats mosquito larvae and other tiny organisms in the pond. In the aquarium they accept all types of prepared foods. The Longfin White Cloud will survive in both warm water and cool water aquariums. They prefer soft to medium hard water.

**PYGMY CORY CATFISH  
(CORYDORAS PYGMAEUS)**



**FEEDING PYGMY CORYDORAS CATFISH**

This is the tiniest of the Corydoras catfish (only about 1/2" long). If you have a community aquarium that houses only small fish, you have the perfect environment for the Pygmy Cory Catfish. Like other Cory Catfish, we suggest keeping them in pairs or more. Digging around for uneaten fish food in the most minute places, the Pygmy Cory Catfish is always in search of food. They also move through the plants and decorations searching for food left behind by the other fish.



**FULL SIZE PYGMY CORY CATFISH PERCHED ON A SINGLE PLANT LEAF!**

Give these little guys soft warm water and peaceful tankmates and they will thrive. If you are worried about them getting enough to eat, you can supplement their diet with a sinking type pellet food and/or frozen bloodworms.

**LONGFIN DANIOS  
(DANIO RERIO)**



**LONGFIN ZEBRA DANIOS**

Anyone that has had an aquarium has likely housed a Zebra Danio at some point or another. Considered one of the hardiest of all freshwater fish, the Zebra Danio will always be popular. But this fish almost makes you dizzy watching dart all over the surface of the aquarium and even can intimidate more shy species. Enter the Longfin Danio! Now this is a stunning little danio with elongated lacy fins that are not nipped by one another. The longer fins also slow the fish down so it is less nervous looking in the aquarium. As with the standard zebra danio, the longfin hybrid is still as tough as nails surviving even in less than perfect water conditions.



**LONGFIN LEOPARD DANIO**

In this same shipment, there are many of the Longfin Leopard Danios as well. Instead of the zebra stripes, these danios have a speckled pattern plus the extravagant long fins. Even better, these fish are cheap! Buy them in groups of three or more for the ultimate surface schooling hardy fish.

**SALTWATER FISH:  
BICOLOR GOATFISH  
(PARUPENEUS BARBERINOIDES)**



**THE BICOLOR GOATFISH CRUISING ABOUT....**

Marine fish hobbyists are always on the look-out for a schooling fish for their aquarium. Goatfish are an excellent choice if you have a relatively peaceful aquarium. In fact, the goatfish rarely leaves any morsel of fish food behind as after the main feeding, they spend the remainder of the day in search of missed food items using their “nanny goat-like” apparatus just below the mouth. Goatfish are always moving meaning they burn up lots of energy every day. For that reason, ensure they get plenty of food, preferably being fed at least twice per day. Goatfish are safe with all but the smallest of fish and do not harm live corals BUT will eat small shrimp.

**FUMANCHU LIONFISH  
(DENDROCHIRUS BIOCELLATUS)**



**THE FUMANCHU LIONFISH**

One of the most unusual (and smallest growing) lionfish in the hobby is the Fumanchu Lionfish. This bottom dwelling lionfish is hard to find in good condition as they do not ship well from the wild. If you decide to ever purchase one of these unusual lionfish, be sure to have the dealer hold it for at least 5 days prior to you picking it up. At Tideline, we offer holds up to 7 days if you simply put a deposit on a fish. Once the Fumanchu Lionfish recovers from shipping, it is actually extremely hardy. Like other wild-caught lionfish, the Fumanchu Lion will only eat live foods at first preferring live grass shrimp (ghost shrimp). As this interesting lionfish approaches its prey, the dorsal spines undulate in a zipper-like fashion. Like other lionfish, the Fumanchu will not harm any fish that will not fit into its mouth. This lionfish only grows to about 5"-6" long making it the perfect lionfish even for smaller aquariums.

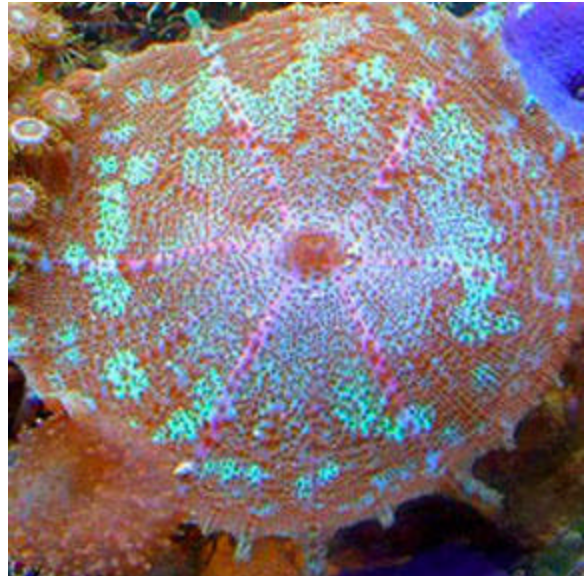
**BLUE DOT SHARPNOSE PUFFERFISH (CANTHIGASTER SOLANDRI)**



THE BEAUTIFUL BLUE SPOT SHARPNOSE PUFFERFISH

Just about everyone loves pufferfish but many just grow too large for smaller aquarium. But there are many dwarf pufferfish (3"-4") often referred to as Sharpnose Pufferfish. The peaceful Blue Dot Sharpnose Pufferfish is one of the prettiest of the dwarf pufferfish. Unlike the bold eating machines many large pufferfish become, sharpnose puffers are mild, slow moving fish that are equally hardy once established. Sharpnose Pufferfish prefer meaty foods combined with some vegetable matter on occasion. The beak-like tooth on pufferfish can over grow if you do not offer your puffer some hard foods like tiny fiddler crabs or small hermit crabs which can prevent the "tooth" from over growing. If you have a smaller aquarium and want a puffer, give one of these beauties a good home.

**INVERTEBRATES: CARIBBEAN CORALIMORPH POLYPS**



CARIBBEAN CORALIMORPH MUSHROOM POLYP

This mushroom coral is about as hardy as it gets. Offering a mix of colors and markings, this mushroom polyp thrives in all types of reef lighting. These are currently attached to small shells and are about 2" across in size. Though photosynthetic, Coralimorph polyps will also appreciate direct feeding with any meaty frozen food. When they feed, the edges of the polyp curl up to form a nice tulip-like shape until the food is digested. Though hardy, these mushroom polyps are slow to multiply but they are inexpensive enough to add a few to any reef aquarium.

**COMMON FEATHER DUSTER TUBEWORM (SABELLASTARTE)**



AN ESTABLISHED FEATHER DUSTER WORM

Displaying this delicate looking feather-like apparatus, tubeworms make a beautiful addition to an invertebrate aquarium. Below the beauty actually lies a not so pretty worm clothed in a

fleshy tube that can suddenly draw in its feeding ‘feathers’ if alarmed. Feather dusters do not require any special lighting but they do need strong water flow from which they filter feed out tiny plankton, detritus and bacteria. Though these worms are hardy, they are sensitive to sudden shifts in water quality, namely salinity. If the salt level is changed to quickly, they duster worm will shed off its cap. It can take up to three weeks for it to form another ‘duster’. When you take home one of these common feather dusters, acclimate it slowly. When you place it in the aquarium, turn the tube up and down gently to purge any trapped air within the tubeworms fleshy tube. Place the tube in an area of good water circulation and rest it against a rock or gently within the substrate. After 24-48 hours the tubeworm will attach itself and begin extending its tube as a permanent anchor. These are beautiful animals that are extremely hardy if giving the proper conditions and adequate food.

**ATLANTIC SCARLET REEF HERMIT (PAGURISTES CADENATI)**



**THE SCARLET RED LEG REEF HERMIT CLOSE-UP**

This picture makes this Scarlet Reef Hermit appear huge but actually they are only about 1” long! These hardy algae grazing reef hermits are completely reef safe. As with all hermit crabs, offer them empty shells to move in to as they molt and grow. If not, they will rip your snails out of their shells and make themselves a new home! Many books also list these hermits as eating Cyanobacteria (slime algae) but we have not seen much of this actually occurring. We recommend this beautiful reef hermit for filamentous algae control.

**CARIBBEAN PINK-TIP ANEMONE (CONDYLACTUS GIGANTEA)**



**THE PINK-TIP CONDYLACTUS ANEMONE**

As you know, anemones can be difficult to keep but the Caribbean Condylactus Anemone is one of the hardiest of the anemones as long as the foot is not damaged (always view the foot for damage when purchasing any anemone). Most Caribbean anemones will not host a clownfish but for whatever reason, the Pinktip Condy seems to be accepted by Maroon Clowns and Sebae Clowns! These anemones are photosynthetic meaning they must be provided with reef lighting in order for the algae in the tissue to thrive. Feed these anemones about 2-3 times per week a meaty frozen food. Like all anemones, the Pink Tip Condy will move about the aquarium until it finds a suitable place (often near good water flow). All anemones can eat fish if a fish darts into the anemone so be aware of this possibility. Marine fish have a natural instinct to stay away from anemones but if spooked, the fish may inadvertently dart into the anemone and be eaten.

**FEATURED FRESHWATER PLANT: SPATTERDOCK PLANT**



**SPATTERDOCK NUPHAR SPECIES**

Spatterdock forms are found from Japan to North America and are fairly hardy plants if offered a rich substrate and care is taken when planting. The stem of this plant is susceptible to rotting if it becomes bruised. If this does occur, using a clean sterile sharp knife or razor and cut the stem about 1" above the damaged area then gently plant it into a soft substrate. This plant will also survive outdoors in the garden pond where it forms lily-like floating leaves and eventually the stunning flower pictured below. In the aquarium, it will not flow or form floating leaves instead developing the pale green translucent leaves pictured earlier.



SPATTERDOCK FLOWERS IN OUTDOOR PONDS

**NEW GERMAN STENDKER DISCUS SHIPMENT NOW IN STOCK AT TIDELINE!!**



The discus are here and we believe this is one of the most incredible shipments we have ever received. They are coming off quarantine on Friday and will be ready for purchase. These fish are already eating pellets and flake foods! See our livestock selection below for varieties available this shipment.

**WHATS NEW AT tideline aquatics?**

**FEEDERS (SEE BELOW!!!!):**

Ghost Shrimp (LOW), Guppies, Crayfish, Fiddler Crabs, Goldfish (OUT), Rosy Redds, Live Black Worms.

**FRESHWATER FISH:**

**Livebearers** – NEW! Santa Claus Swordtails, Gold Crescent Platies, Sailfin Mollie Pairs, Multi-Color Fancy Guppy Pairs, XL Red Velvet Swordtails, Assorted Swordtails, Dalmation Mollies, Assorted Platies, Gold Dust Mollies, Lg Marigold Lyretail Swordtails, Black Yucatan Mollies.

**Catfish/Loaches/Plecostomus** – NEW! Orange Stripe Corydoras Catfish (unbelievable!), Botia Striata Loaches, Albino Corydoras Catfish, Arcuatus (Skunk) Corydoras Catfish, Medium Siamensis Flying Fox Algae Eaters, Tank Bred Bushynose Plecostomus, L007 Dracula Plecostomus, L018 Gold Nugget Plecostomus, Pygmy Corydoras Catfish, Horseface Loaches, Banded Coolie Loaches, Turashukin Catfish, Hypostomus Plecostomus, Chinese Butterfly Sucker Loaches, Golden Marble Chinese Algae Eaters, 2" Clown Loaches, 5" Clown Loaches (WOW), Common Plecostomus.

**Brackish** – Tank Bred Archerfish, Tank Bred Mono Sebae, Tank Bred Mono Argentius, Green Spotted Pufferfish, Figure Eight Pufferfish.

**Tetras / Rasboras / Barbs / Danios** – Longfin Leopard Danios, Longfin Zebra Danios, Longfin White Cloud Mountain Minnows (awesome), Tank Bred Cardinal Tetras, Silver Hatchetfish, Zebra Danios, Rummynose Tetras, Large Neon Tetras, Orange Von Rio Tetras (beautiful), Electric Green Glo-fish, Sunburst Orange Glo-fish, Longfin Black Skirt Tetras, Red Serpae Tetras, Bloodfin Tetras, Scissortail Rasboras, Harlequin Rasboras, Male Longfin Rosy Barbs, Red Cherry Barbs, NEW Octozona Barbs, Lg Congo Tetras, Red Phantom Tetras, Red Starfire Glofish Danios, Tiger Barbs, Medium Silver Dollars, White Cloud Mountain Minnows, Green Fire Tetras, Bleeding Heart Tetras.

**Gouramis / Bettas** – Male Show Bettas, Powder Blue Dwarf Gouramis, Pink Kissing Gouramis, Red Paradise Gouramis, Opaline Gouramis, Small and M/L Leopard Ctenopoma, Red Flame Dwarf Gouramis, Gold Gouramis.

**Cichlids** (Dwarf, South American, African) – Green Severums, Black “Inkfin” Calvus Cichlids, Apistogramma cacatuoides ‘Mega Red’ Pairs, Black Lace Angelfish, Gold Veil Angelfish, Koi Angelfish, Zebra Lace Veil Angelfish, German Blue Rams, German Gold Rams, Festae Cichlids, Lg Albino Compressicep Cichlids, Geophagus ‘Red Head Tapajos’ Eartheaters, Baby Peacock Bass, Apistogramma Fancy Pairs (few), Livingstoni African Cichlids, Golden Rock Kribensis Cichlids, Altispinosa Bolivian Rams, S/M Jaguar Cichlids, M/L Jaguar Cichlids, Electric Blue Jack Dempseys, Small Oscars, Medium Striated Pike Cichlids, S/M Orange Pike Cichlids, Rare Metae Cichlids, Small Jaguar Cichlids, Assorted Medium Peacock Cichlids, Lg Male Electric Blue Ahli Cichlids, Medium Firemouth Cichlids, Green Terror Cichlids, XL Wild Caught Altum Angelfish (Nice), Assorted Small Standard Angelfish, Julidichromis Cichlids, Assorted Premium Mbuna African Cichlids, Texas Cichlids, Telmatochromis brichardi Cichlids, Daffodil Brichardi Cichlids, Male Otopharynx lithobates Cichlids.

**Other** – Golden Sulawesi Gudgeon Gobies, Clown Knives, Elipsifer Eel (stunning), Large Tiretrack Eel, Dwarf African Frogs, Tank Bred Black Ghost Knives, Freshwater Flounders, Rainbow Sharks, Redtail Black Sharks, Leporinus Fasciatus, Roseline Denisonii Sharks, Freshwater Stingrays, African Butterflyfish, Lg Silver Arowanas, XL Clown Knifefish, Yellowtail Spiny Eels, African Ropefish, Chinese Algae Eaters, Bala Sharks, Orange Japonica Shrimp, Olive Nerite Snails, Medium Silver Dollars, Albino Clawed Frogs, Electric Green, Red Starfire & Orange Glo-fish, Red Cherry Shrimp, XL Albino Clawed Frogs.

**German Stendker Discus** – Green Turquoise, Red Turquoise, Marlboro Reds, Blue Diamonds, Silver Pigeon Bloods, Red Pigeon Bloods, Red Snakeskins, Snakeskin x Green Turquoise, Blue Cobalts. These fish are in perfect condition!!

**Goldfish** – Red Cap Orandas, Medium Assorted Orandas, Large Assorted Orandas, Assorted Ryunkin Fantails, Small Assorted Fantails, Small Black Moors.

### **Koi, Pond Fish and Pond Plants –**

XL and Jumbo Domestic Koi, Small Koi, Medium Koi, Medium Butterfly Koi (few), Shubunkins (few).

The list above represents only the most recent livestock shipment. We have MANY other species available at the store!

### **SALTWATER FISH:**

**Angels / Butterflyfish** – Argi Pygmy Angelfish, Juvenile Koran Angelfish, Eiblii Angelfish, Lemon Peel Angelfish, Yellow Dwarf Angelfish, Half Black Angelfish, Flame Angelfish, Black and White Heniochus Butterflyfish, Auriga Threadfin Butterflyfish, Raccoon Butterflyfish, Asfur Angelfish, Coral Beauty Angelfish, Super Rare Blueline Angelfish, Kleini Butterflyfish.

**Clownfish** – Ocellaris Clownfish, XL Tank Bred Ocellaris Clownfish, Maroon Clownfish, Xanthurus Clownfish, Gold Bar Maroon Clownfish, Pair True Black Ocellaris Clownfish (incredible!), Sebae Clownfish, Orange Skunk Clownfish.

**Gobies / Blennies** – Algae Blennies, Orange Barred Torpedo Gobies, Blue/Green Torpedo Gobies, Pearly Jawfish, Dusky Jawfish, Diamond Sifter Gobies, Atlantic Sailfin Blennies (as always- awesome!!!!), Blue Neon Gobies, Cool Dwarf Rose Gobies, Purple Firefish Gobies, Blue Mandarin Dragonettes, Klauswitz Blenny, Clown Gobies, Redhead Gobies, Adult and Juvenile Engineer Gobies, Randalli Gobies, Golden Midas Blennies, Eyelash Blennies, Firefish Gobies, Spotted Mandarins, Yellowtail Mozambique Fang Blennies, Yellow Watchman Gobies, Fiji Yellow Citron Clown Gobies, Bluefin Watchman Gobies.

**Wrasses / Hogfish** – Yellow Coris Wrasses, Solorensis Fairy Wrasse, Black Bird Wrasse, Candy Hogfish, RARE Yellow Pedito Hogfish, Twelve Line Wrasses.

**Tangs / Rabbitfish** – Convict Tang, Powder Blue Tangs, Hawaiian Yellow Tangs, Orangefin Tangs, Sailfin Tangs, Hawaiian Orange Shoulder Tangs, Foxface Rabbitfish, Blue Barred Rabbitfish, Small Blue Regal Tangs.

**Triggerfish / Eels / Puffers** – Porcupine Pufferfish, Dogface Pufferfish, Blue Dot Pufferfish, Valentini Pufferfish, Hawaiian Humu Triggerfish, Bluejaw Triggerfish, Rectangulus Triggerfish, Blueline Triggerfish, Small Clown Triggerfish, Bursa Triggerfish, Chainlink Moray Eels, Large Banded Moray Eel, S/M Snowflake Moray Eels, Green Wolf 'Eel', Niger Triggerfish

**Lionfish** – Fumanchu Lionfish, Fuzzy Dwarf Lionfish, Baby Black Volitan Lionfish, Dwarf Lionfish

**Other** – Yellow Goatfish, Bicolor Goatfish, Village Belle Damsel fish, Green Chromis (nice), Harlequin Bass, Dusky Jawfish, Large Big Eye Squirrelfish, Red Striped Squirrelfish, Pajama Cardinalfish, Hawaiian Banded Hawkfish, Flame Hawkfish, Bicolor Pseudochromis, Vanderbuilt Chromis, Assorted Damsel fish, Male Squareback Anthias, Pearly Jawfish, Bartlett's Anthias, Black Cardinalfish, Marine Betta, Gold Striped Cardinalfish, Neon Velvet Damsel fish, Green Mandarin Dragonettes, New Red Pseudochromis, Miniatus Grouper (baby and large).

#### **INVERTEBRATES:**

**Snails / Cucumbers / Starfish / Urchins** – Common Serpent Starfish, Trochus Turbo Snails, Pencil Urchins, Strombus Conch Snails, Basket Starfish, Common Sifting Cucumbers, Banded Serpent Starfish, Caribbean Turbin Snails, Cerith Snails, Bahama Starfish, Green Brittle Starfish

**Crustaceans** – Candy Pistol Shrimp, Anemone Shrimp, Golden Banded Shrimp, Red Curlique Pistol Shrimp, Sally Lite Foot Crabs, Anemone Crabs, Small Sifting Horseshoe Crabs, Scarlet Atlantic Reef Hermits, Pom Pom Crabs, Electric Blue Reef Hermits, Blueleg Reef Hermits, Arrow Crabs, Reef Lobsters, Common Pistol Shrimp, Caribbean Peppermint Shrimp, Cleaner Shrimp, Red Fire Shrimp, Evil Peacock Mantis Shrimp, Green Saron Shrimp, Redtip Reef Hermits, Emerald Crabs, Coral Banded Shrimp.

**Corals / Polyps / Mushrooms** – Super Red Mushroom Rocks, Green Flower Mushroom Rocks, Bullseye Mushroom Rocks, Caribbean Coralimorph Mushroom Polyps, Green Pineapple Favia Coral, Green Metallic Star Polyp Rocks, Show Size Star Polyp Rocks, Tubastrea Orange Sun Polyp Rocks, Green Yuma Mushroom

Rocks, Pink Zoanthid Rocks, Elegant Moon Button Polyp Rocks, Super Show Size Metallic Wall Hammer Coral, Super Show Size Multi-Color Branching Frogspawn Corals, Medium Assorted Color Frogspawn Corals, Green Torch Corals, Gold Torch Corals, Green Finger Leather Corals, Candy Caulestrea Corals, Long Tentacle Plate Coral, Leptastrea Brain Corals, Super Blue Mushroom Rocks, Blasstomussa Corals, Pink Fungia Plate Coral, Yellow Polyps, Green Zoanthid Rocks, TRUE BLUE ZOANTHID ROCK, Toadstool Leather Corals, Green Trachyphilia Corals, Red Trachyphilia Corals, Green Scolymia Vitiensis Corals, Orange Scolymia Vitiensis Corals, Cultured Acroporas, Assorted Indo Mushroom Rocks.

**Other** – Flowering Rock Anemones, Pink Tip Caribbean Anemones, Yellow Sea Fans, Pink/Red Feather Dusters, Super Nice Fancy Gorgonian Sea Fans, Long Tentacle Anemones, Sebae Anemones, Hardy Yellow Ball Sponges, M/L Blue Crocea Clams, Nice Common Feather Dusters, Red Hard Tube Coco Worm Dusters, Assorted Cured Live Rock.

This list is based on our most recent shipments of saltwater livestock. There are many other species available in the store not included in this list.